

Appendix A

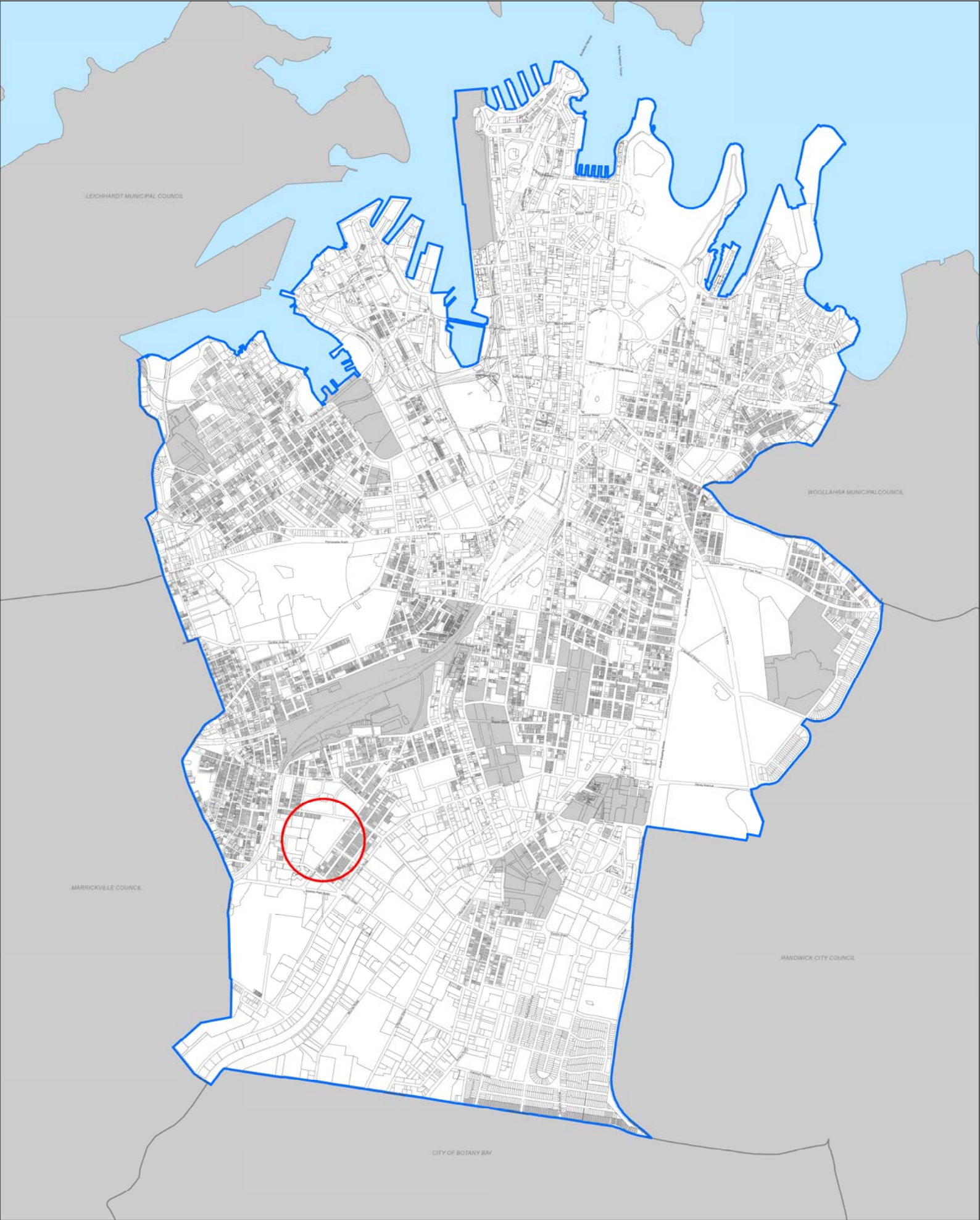
DCP Figures and Maps book

This book includes both 'in DCP' Figures as well as maps that form part of the DCP Map book.

Where post exhibition amendment is proposed to a figure or map it is circled in red.

For each map being amended by the DCP amendment a 'map set' is provided, including:

- Map A – the current map under Sydney DCP 2012;
- Map B – the publicly exhibited map under the draft DCP amendment, which in some cases is the 'Final' map being proposed following the public exhibition of the Draft DCP amendment;
- Map C – the map showing where changes are recommended following public exhibition of the draft DCP amendment. Where a Map C is included it is the 'Final' map being proposed under the draft DCP amendment.



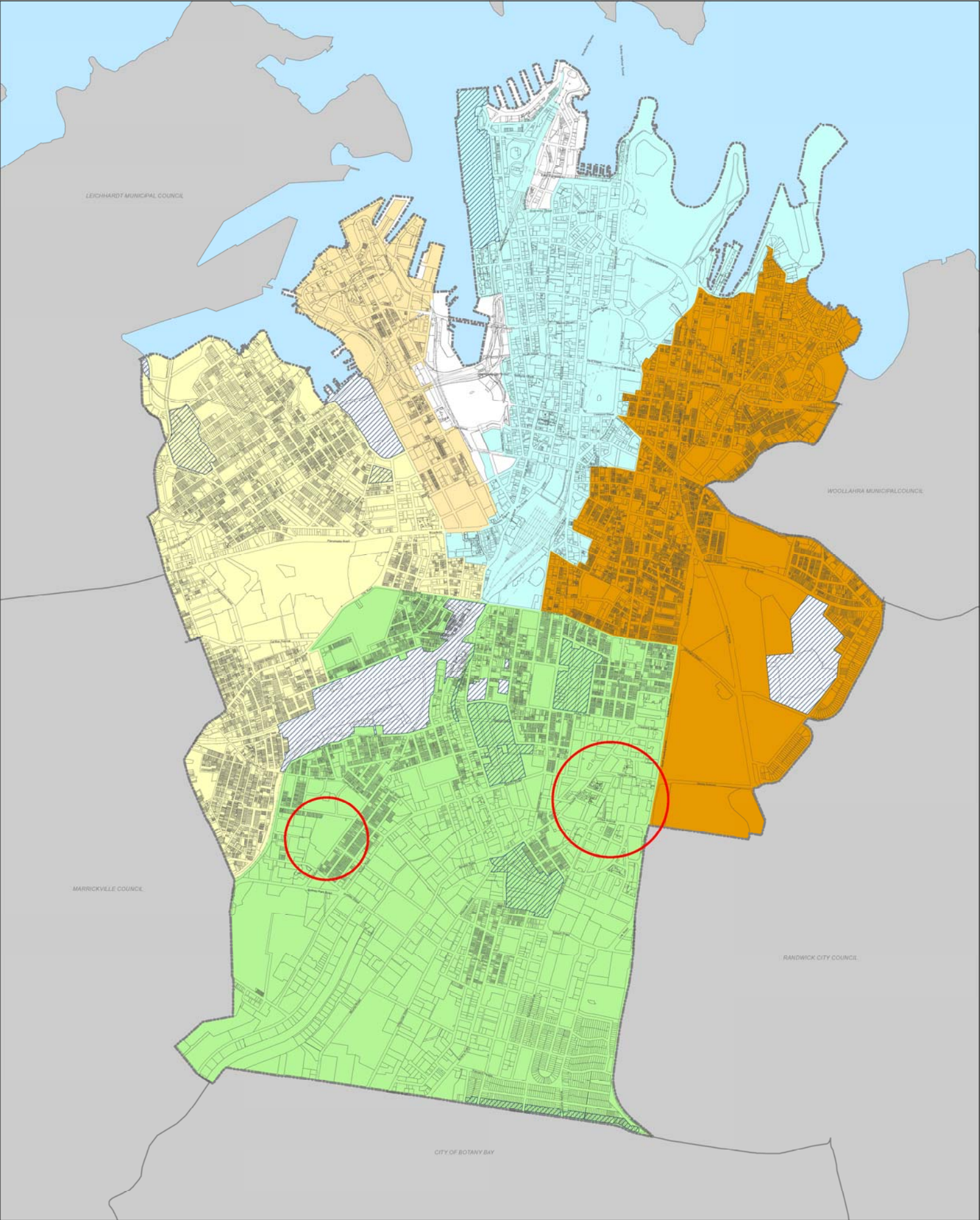
- KEY**
- CITY OF SYDNEY LGA
 - LAND EXCLUDED FROM THIS DCP
 - AREA COVERED BY THIS DCP



FIGURE 1.1 - LAND COVERED BY THIS DCP

0 0.5 1 km

FEBRUARY 2015

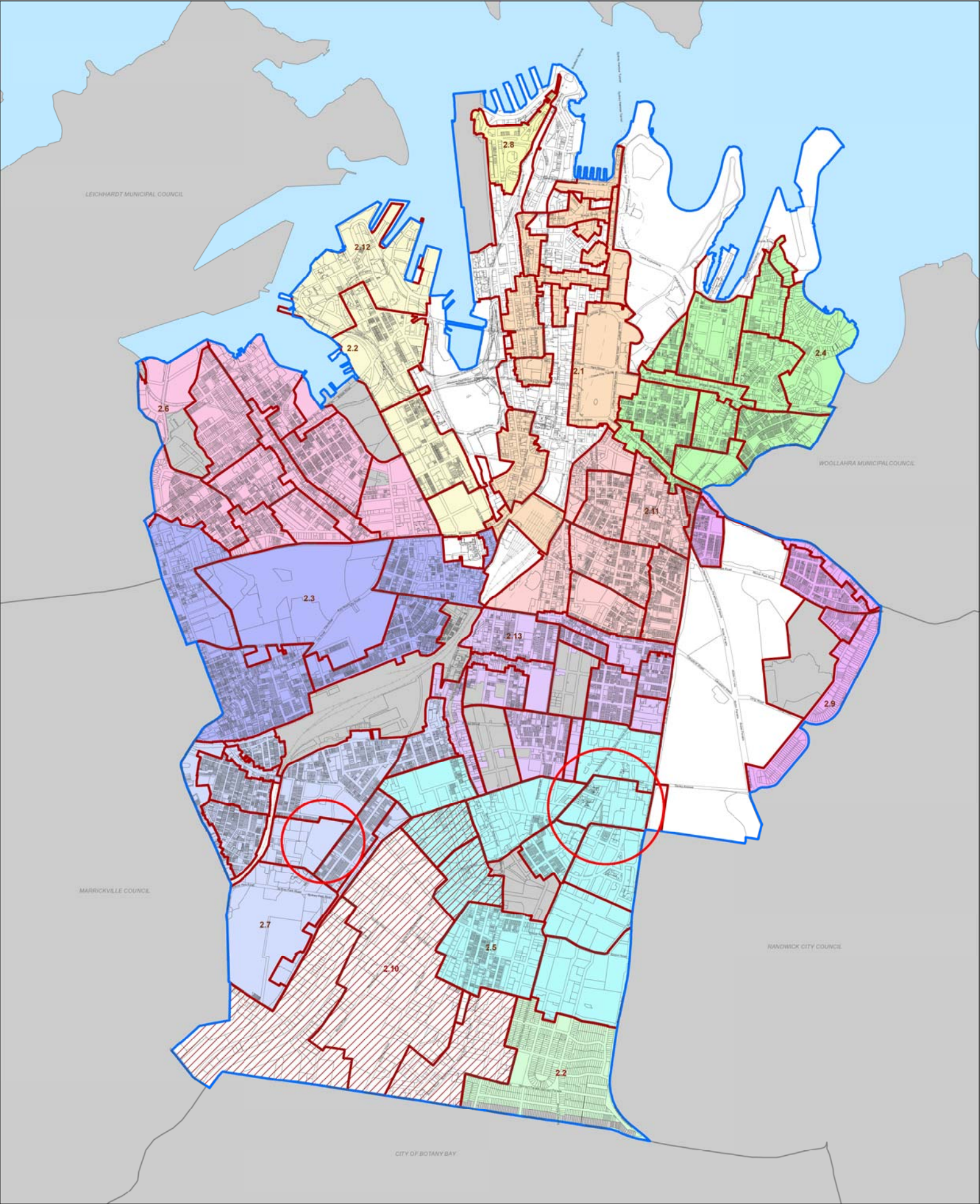


KEY			
CITY OF SYDNEY LGA	CITY OF SYDNEY SEC.61 CENTRAL SYDNEY CONTRIBUTIONS (AMENDMENT) PLAN 2002	CITY OF SYDNEY SEC.94 CONTRIBUTIONS PLAN 2006 (SOUTHERN PRECINCT)	
LAND EXCLUDED FROM THIS DCP	CITY OF SYDNEY SEC.94 CONTRIBUTIONS PLAN 1994 (ULTIMO-PYRMONT)	CITY OF SYDNEY SEC.94 CONTRIBUTIONS PLAN 2006 (EASTERN PRECINCT)	
	CITY OF SYDNEY SEC.94 CONTRIBUTIONS PLAN 2006 (WESTERN PRECINCT)		

FIGURE 1.2 - CONTRIBUTIONS PLANS WITHIN THE CITY OF SYDNEY LGA

0 0.5 1 km

FEBRUARY 2015



KEY


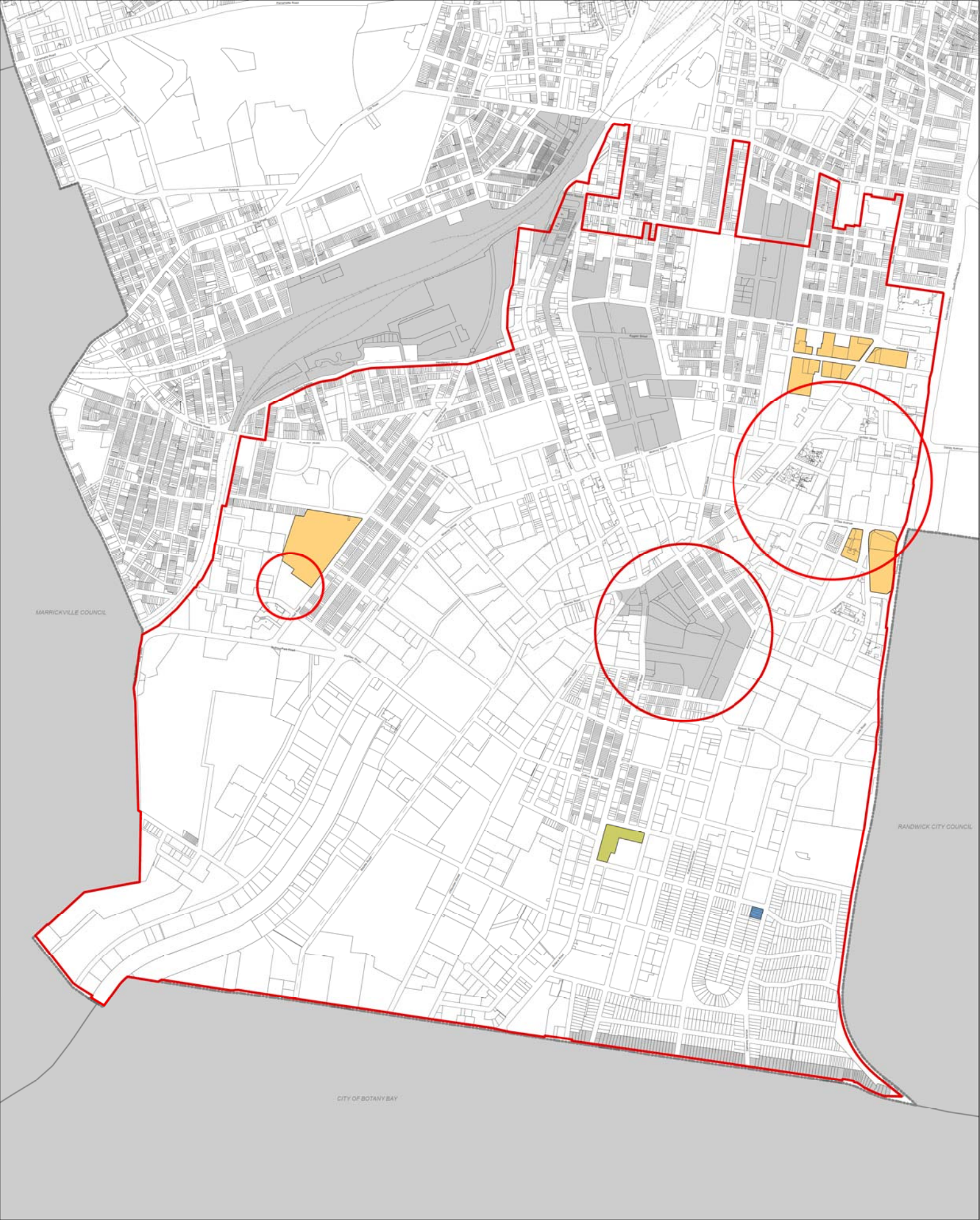
- | | | |
|--|---|--|
|  CITY OF SYDNEY LGA |  2.4 CITY EAST |  2.9 PADDINGTON/CENTENNIAL PARK |
|  LAND EXCLUDED FROM THIS DCP |  2.5 GREEN SQUARE |  2.10 SOUTHERN EMPLOYMENT LANDS |
|  2.1 CENTRAL SYDNEY |  2.6 GLEBE AND FOREST LODGE |  2.11 SURRY HILLS |
|  2.2 ROSEBERY ESTATE |  2.7 ERSKINEVILLE, ALEXANDRIA (WEST) AND NEWTOWN (SOUTH) |  2.12 ULTIMO/PYRMONT |
|  2.3 CHIPPENDALE, CAMPERDOWN, DARLINGTON |  2.8 MILLERS POINT |  2.13 WATERLOO AND REDFERN |



FIGURE 2.1 - CITY LOCALITY AREAS

0 0.5 1km

FEBRUARY 2015



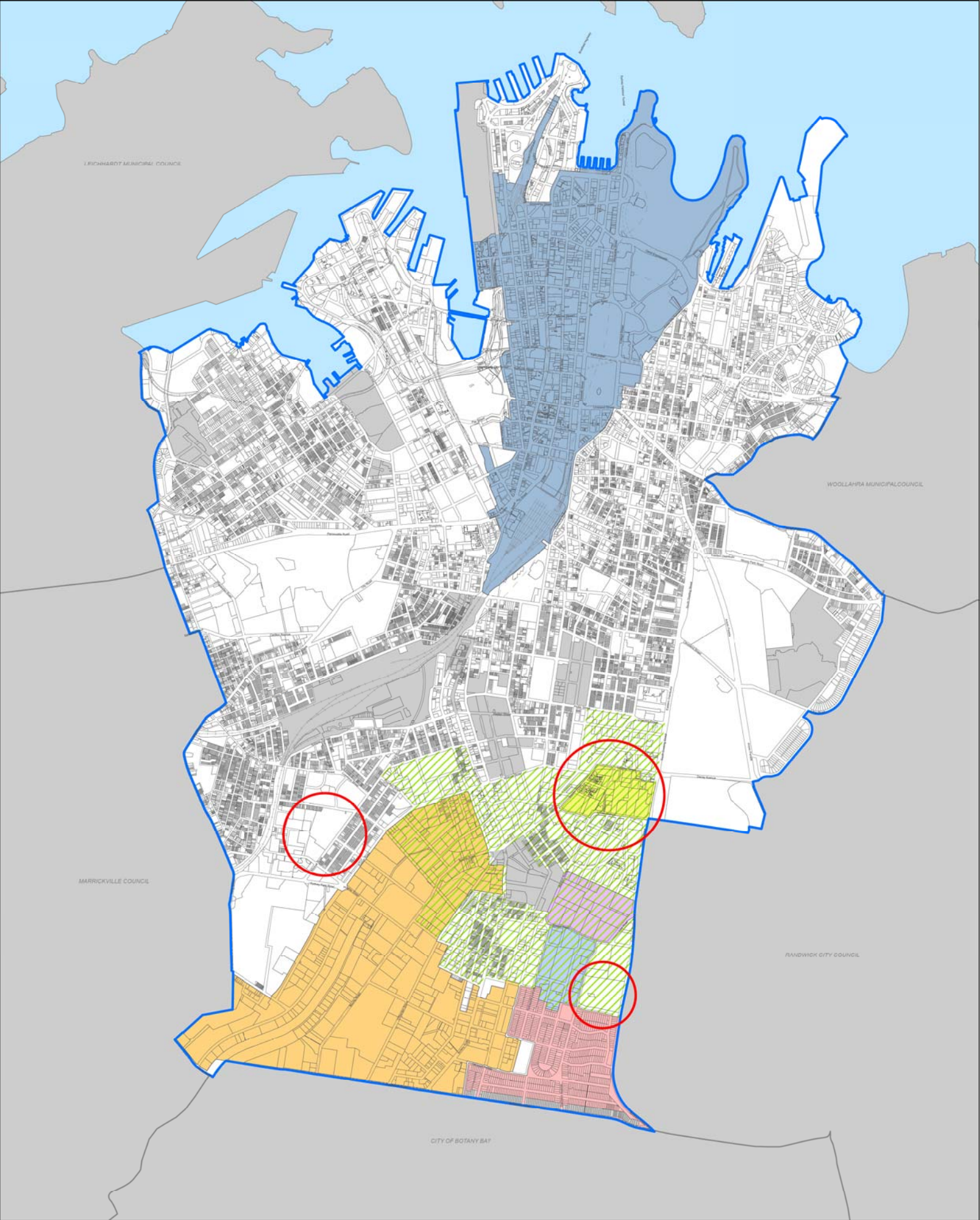
- KEY**
- CITY OF SYDNEY LGA
 - LAND EXCLUDED FROM THIS DCP
 - GREEN SQUARE TOWN CENTRE PRIMARY TRADE AREA
 - LOCAL VILLAGE CENTRE
 - SMALL VILLAGE CENTRE
 - NEIGHBOURHOOD CENTRE



FIGURE 3.12 - HIERARCHY FOR CENTRES, CITY SOUTH

0 0.25 0.5km

MARCH 2015



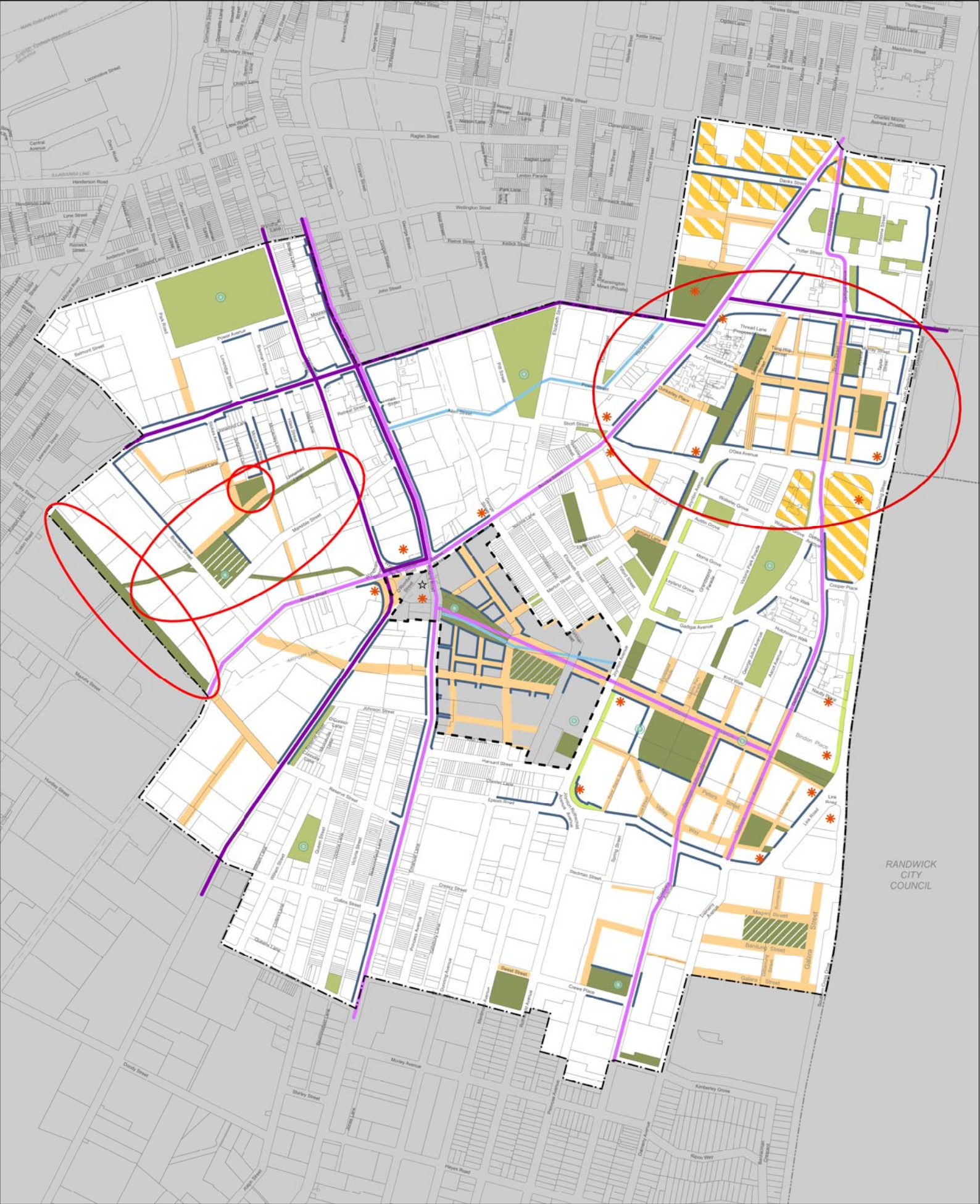
- KEY**
- CITY OF SYDNEY LGA
 - LAND EXCLUDED FROM THIS DCP
 - CENTRAL SYDNEY
 - GREEN SQUARE
 - EPSOM PARK
 - NORTH ROSEBERY
 - ROSEBERY ESTATE
 - SOUTHERN EMPLOYMENT LANDS
 - LACHLAN



FIGURE 5.1 - SPECIFIC AREAS

0 0.5 1km

MARCH 2015



RANDWICK CITY COUNCIL

KEY

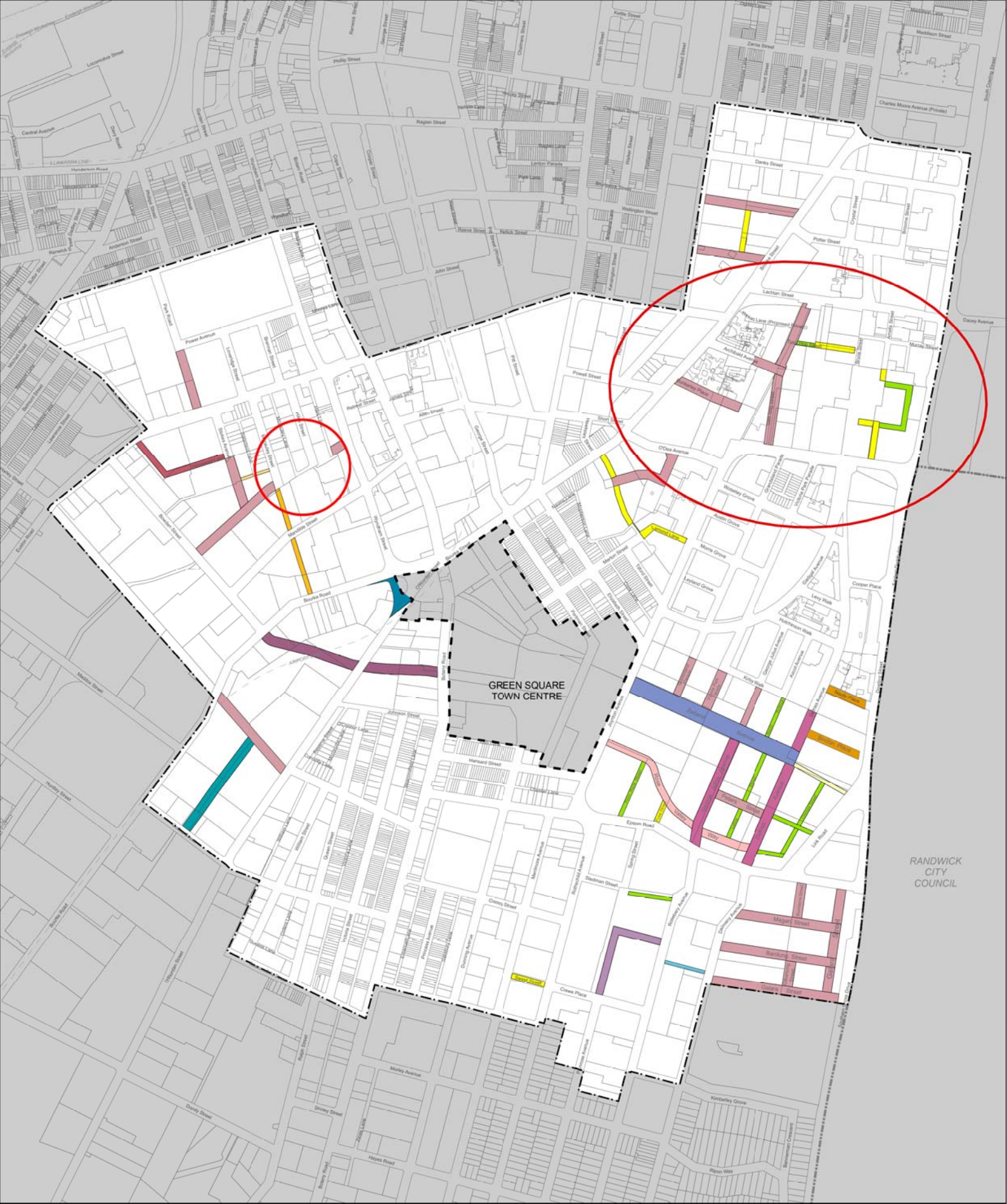
- GREEN SQUARE
- GREEN SQUARE TOWN CENTRE/
PLANNED MAJOR CENTRE
- LAND EXCLUDED FROM THIS DCP
- LOCAL VILLAGES
- COMMUNITY NODES
- HIGHLY VISIBLE SITES
- TRAIN STATION
- ACTIVE FRONTS
- PROPOSED STREETS
- PUBLIC TRANSPORT CORRIDOR
- MAJOR ROAD
- WATER CHANNEL OPEN SPACE LINK
- DETENTION OPEN SPACE
- EXISTING OPEN SPACE
- LANDSCAPE SETBACK 10M
- REQUIRED OPEN SPACE



FIGURE 5.34 - GREEN SQUARE STRUCTURE PLAN

0 150 300m

MARCH 2015



RANDWICK CITY COUNCIL

GREEN SQUARE	LOCAL STREET 9M WIDE	LOCAL STREET 16M WIDE	SHARED ZONE
GREEN SQUARE TOWN CENTRE/ PLANNED MAJOR CENTRE	LOCAL STREET 10M WIDE	LOCAL STREET 18M WIDE	VARIABLE
LAND EXCLUDED FROM THIS DCP	LOCAL STREET 12M WIDE	LOCAL STREET 20M WIDE	TRANSPORT CORRIDOR AVAILABLE
LANE 6M WIDE	LOCAL STREET 12.6M WIDE	COLLECTOR ROAD 21M WIDE	BOULEVARD
LOCAL STREET 7M WIDE	LOCAL STREET 15M WIDE	COLLECTOR ROAD 22M WIDE	PEDESTRIAN AND CYCLE LANE 10M WIDE

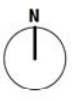
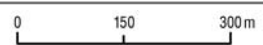


FIGURE 5.36 - GREEN SQUARE STREET HIERARCHY AND LAYOUT



MARCH 2015

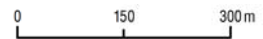


RANDWICK CITY COUNCIL

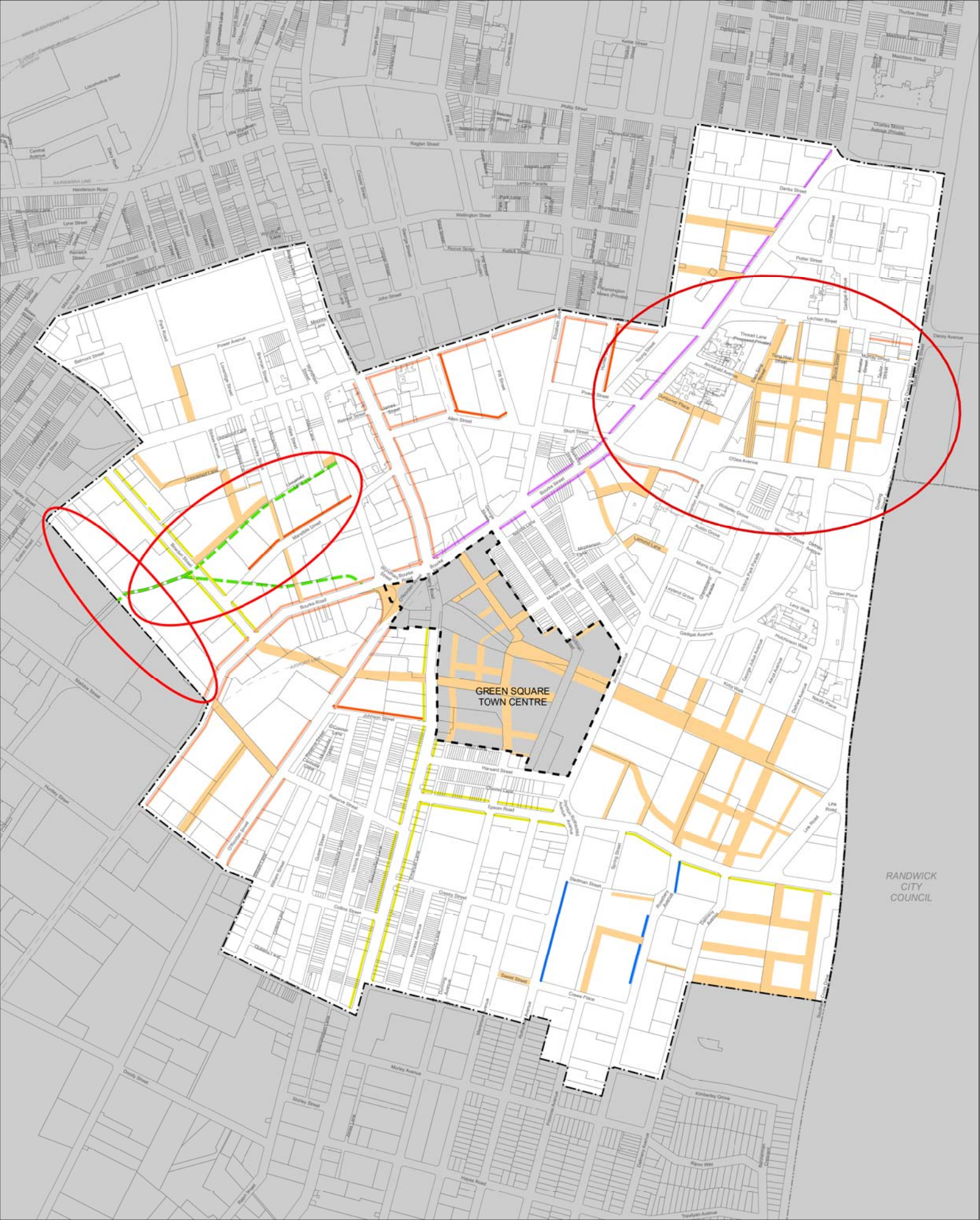
	GREEN SQUARE		DETENTION OPEN SPACE		WATER CHANNEL OPEN SPACE LINK
	GREEN SQUARE TOWN CENTRE		EXISTING OPEN SPACE		PROPOSED STREETS
	LAND EXCLUDED FROM THIS DCP		LANDSCAPE SETBACK 10M		
	OPEN SPACE CATCHMENT AREAS		REQUIRED OPEN SPACE		



FIGURE 5.39 - GREEN SQUARE PUBLIC OPEN SPACE



MARCH 2015

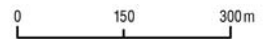


KEY

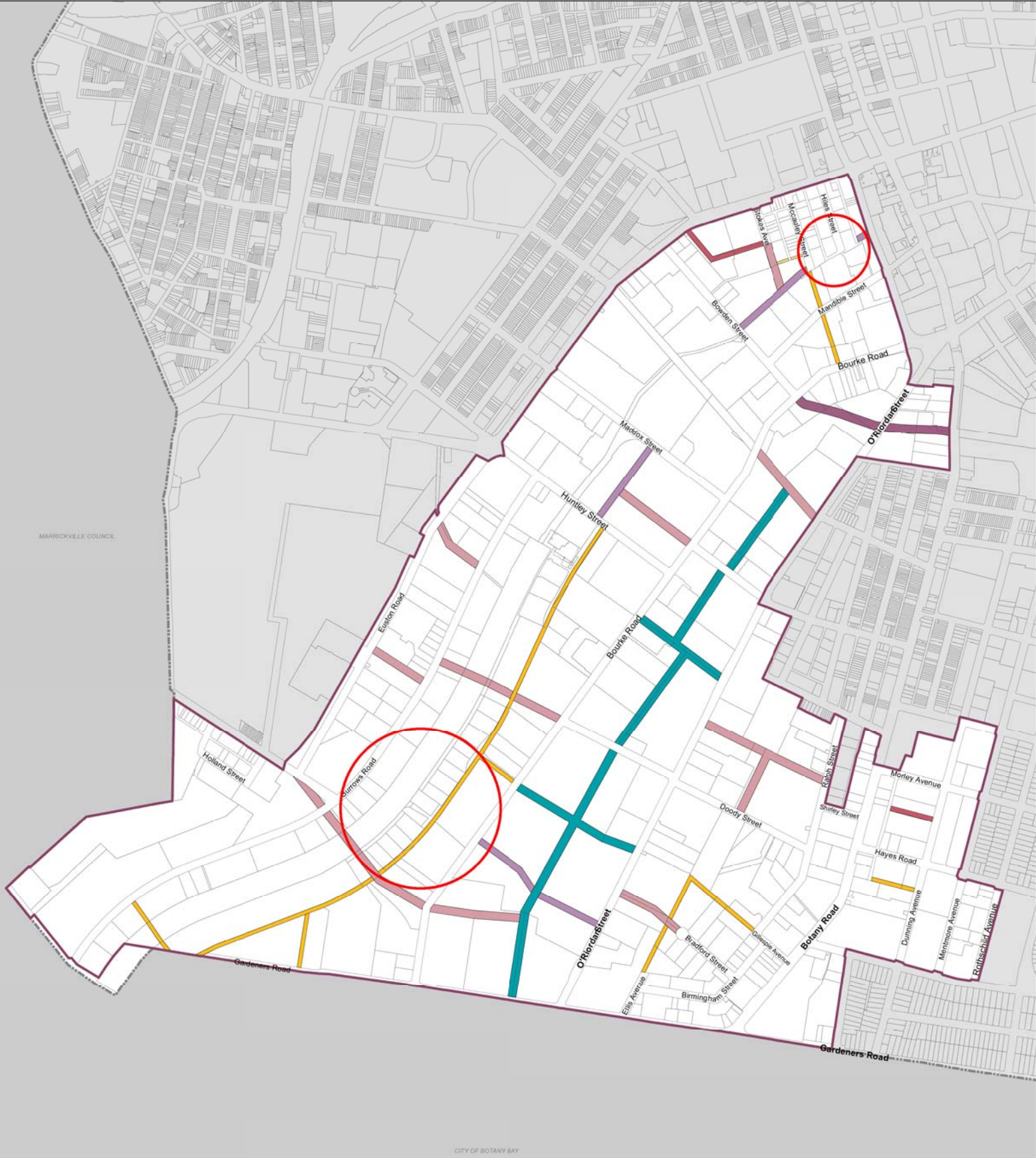
GREEN SQUARE	LIVEABLE GREEN NETWORK	3M SETBACK
GREEN SQUARE TOWN CENTRE	1.4M SETBACK	6.4M SETBACK
LAND EXCLUDED FROM THIS DCP	2M SETBACK	10M LANDSCAPE SETBACK
PROPOSED STREETS	2.4M SETBACK	



FIGURE 5.43 - GREEN SQUARE SETBACKS AND PUBLIC DOMAIN IMPROVEMENT



MARCH 2015



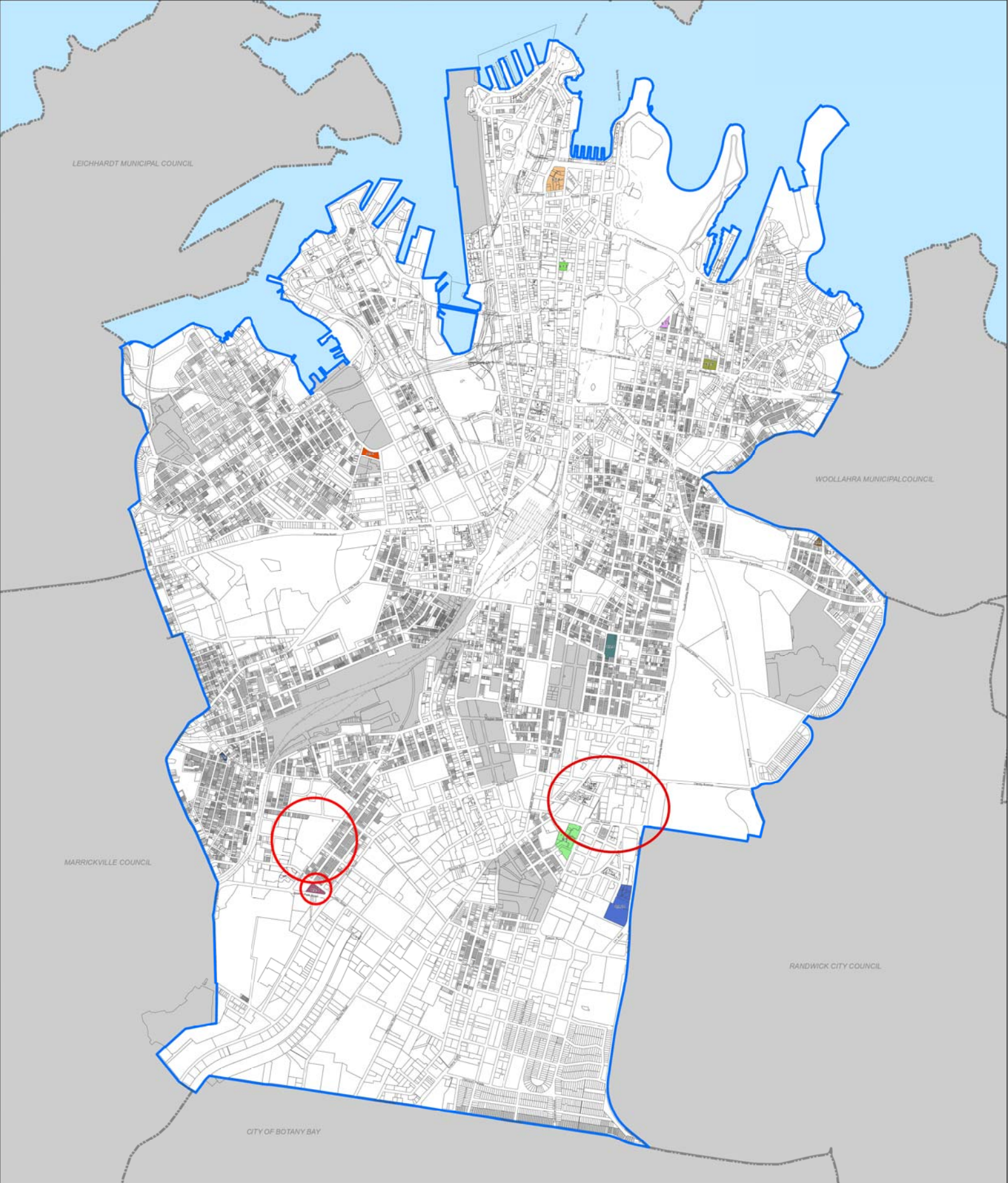
 EMPLOYMENT LANDS STRATEGY BOUNDARY	 LOCAL STREET 12.6M WIDE	 COLLECTOR ROAD 22M WIDE
 CITY OF SYDNEY LGA	 LOCAL STREET 16M WIDE	
 LANE 6M WIDE	 LOCAL STREET 20M WIDE	
 LOCAL STREET 10M WIDE	 COLLECTOR ROAD 21M WIDE	



FIGURE 5.107 - EMPLOYMENT LANDS STREET HIERARCHY AND LAYOUT



FEBRUARY 2015



KEY

- CITY OF SYDNEY LGA
- LAND EXCLUDED FROM THIS DCP
- 6.1.3(a) 19-25 LYONS ROAD, CAMPERDOWN
- 6.1.3(b) 13-17 AND 5-11 PYRMONT BRIDGE ROAD, CAMPERDOWN
- 6.1.4 COMMONWEALTH BANK "MONEY BOX" SITE 108-120 PITT STREET, SYDNEY
- 6.1.5 THE APDG SITE (BOUNDED BY ALFRED, PITT, DALLEY AND GEORGE STREETS)
- 6.1.6 ST JOHN'S CHURCH HALL AND MANSE, PADDINGTON
- 6.1.7 FORMER SYDNEY EYE HOSPITAL, WOOLLOOMOOLOO

- 6.1.8 VICTORIA PARK, SOUTH DOWLING CORRIDOR
- 6.1.9 EMAIL SITE, 13 JOYNTON AVENUE, ZETLAND
- 6.2.4 18 HUNTLEY STREET, ALEXANDRIA
- 6.2.6 25-33 ERSKINEVILLE ROAD, ERSKINEVILLE (PETROL STATION)
- 6.2.7 TELECOMMUNICATIONS BUILDING
- 6.2.8 SURRY HILLS SHOPPING VILLAGE, REDFERN
- 6.2.9 BAYSWATER CAR RENTAL, WOOLLOOMOOLOO
- 6.3.1 87 BAY STREET, GLEBE

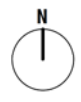


FIGURE 6.1 - SPECIFIC SITES

0 0.5 1km

MARCH 2015